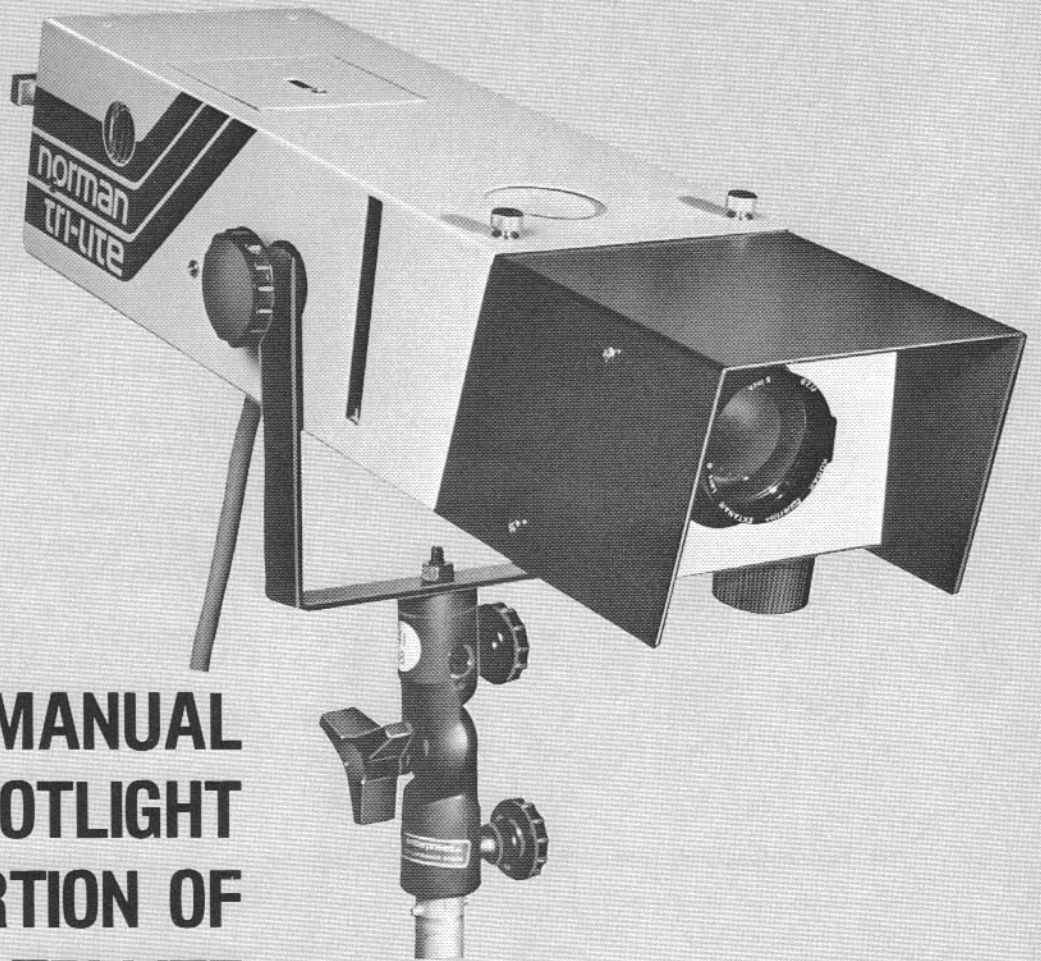


norman



**INSTRUCTION MANUAL
OPTICAL SPOTLIGHT
PORTION OF
NORMAN TRI-LITE**

TRI-LITE

Save these Instructions

IMPORTANT SAFEGUARDS

in accordance with UL 122 specifications for photographic equipment.

When using your photographic equipment, basic safety precautions should always be followed, including the following:

1. Read and understand all instructions.
2. Care must be taken as burns could occur from touching the modeling lamp.
3. Do not operate the appliance with a damaged cord or if the appliance has been dropped or damaged until it has been examined by a qualified serviceman.
4. If an extension cord is necessary, a cord with a suitable current rating should be used. Cords rated for less amperage than the appliance may overheat. Care should be taken to arrange the cord so that it will not be tripped over or pulled.
5. When practical, unplug the appliance from the electrical outlet when not in use. Never yank the cord to pull from the outlet. Grasp the plug and pull to disconnect.
6. To avoid electric shock hazard, do not disassemble this appliance, but take it to a qualified serviceman when service or repair work is required. Incorrect reassembly could cause an electric shock hazard when the appliance is subsequently used.

OPTICAL SPOTLIGHT


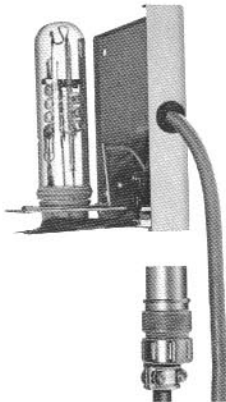
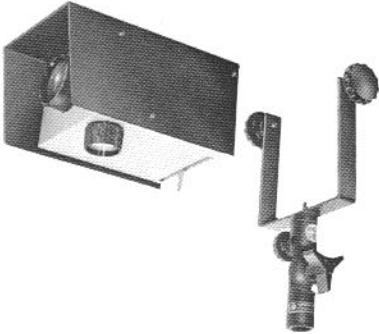
Supplied with a 5" focal length lens which yields a 45" diameter spot at ten feet. Optional lenses are available through your local camera store. Most any lens that operates with a Kodak Carousel slide projector will operate with the TRI-LITE.

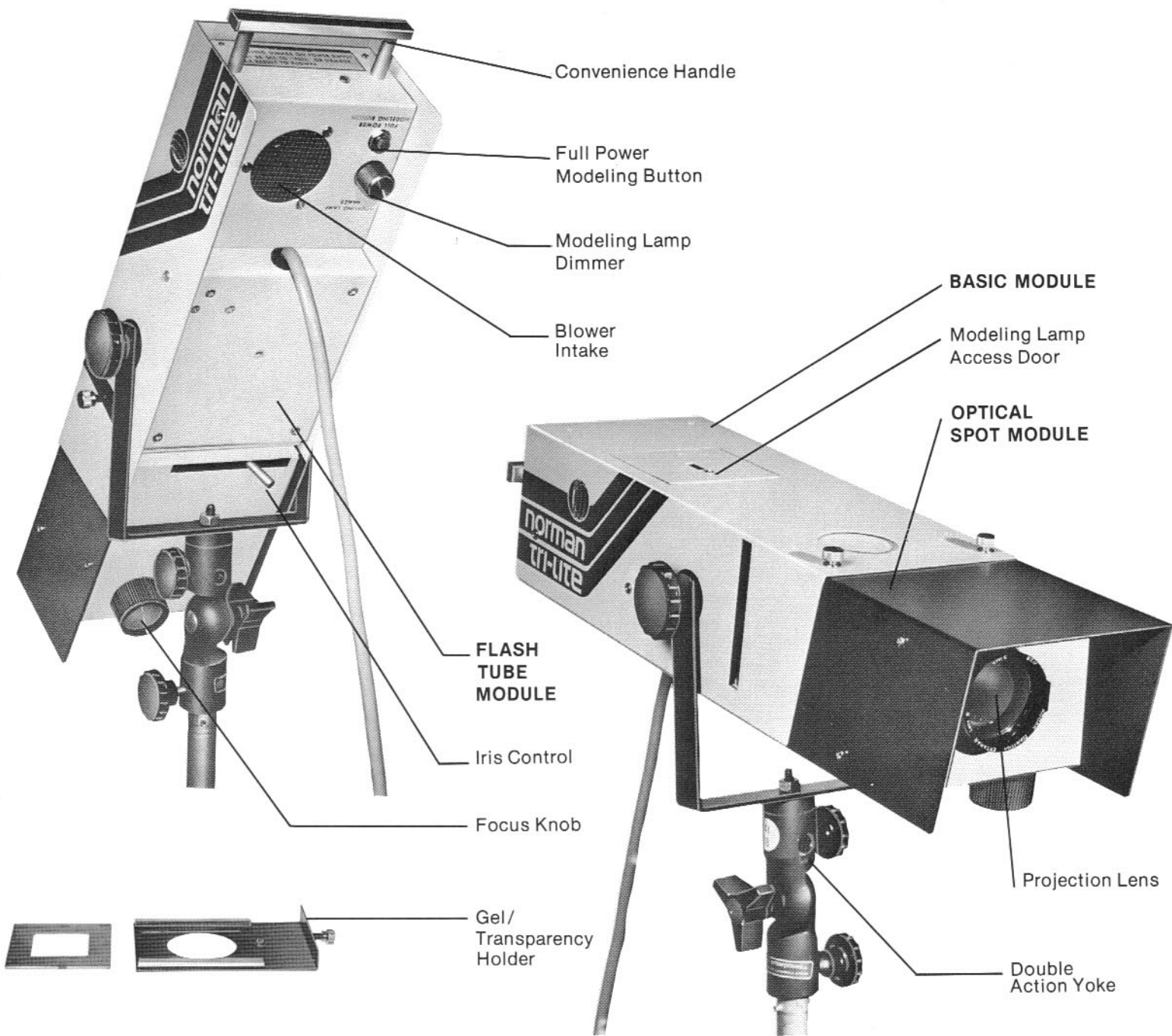
A built-in iris diaphragm controls the size of the spot without affecting light output (exposure). The internal condensing lens system has a speed of $f/1.5$ which makes the TRI-LITE extremely efficient. The ASA 100 guide number is 95 at 200 watt-seconds, the guide number is 200 at 1250 watt-seconds.

A 250-watt quartz-halogen modeling lamp makes viewing a breeze, and the output of the modeling lamp can be varied in ratio to the flash output via the dimmer control located on the TRI-LITE.

You can project colors, patterns, and transparencies because the TRI-LITE has a Gel/Transparency holder that slips into the unit.

The Optical Spotlight consists of these three modules:

| | | |
|--|--|--|
|  <p>BASIC MODULE #TL-A</p> <p>The 2-piece Gel/transparency holder is included with the Basic Module.</p> |  <p>FLASH TUBE MODULE 450 Series - TL-B450 900 Series - TL-B900</p> <p>Select the Series that corresponds with the power supply that will be used.</p> |  <p>OPTICAL SPOT MODULE #TL-C</p> <p>Includes a 5" flat field lens, and a yoke assembly.</p> |
|--|--|--|



EXPLANATION OF COMPONENTS

BASIC MODULE

The heart of the TRI-LITE. Contains a 250w (ENH) modeling lamp, an extremely efficient f/.5 condensing lens system, forced air cooling system, modeling lamp dimmer, full power modeling lamp button, and Gel/transparency holder.

Modeling Lamp Access Door

To replace the ENH modeling lamp, open Access Door and slide the socket lever to the rear. This lifts the lamp from the socket. Be sure the TRI-LITE is disconnected from the power supply when replacing the lamp.

Modeling Lamp Dimmer

Ratios the modeling lamp intensity to the flash so the TRI-LITE will visually balance with your other studio flash units.

Full Power Modeling Button

Boosts the modeling lamp output to enable you to better visualize lighting effects when working under high ambient light conditions.

EXPLANATION OF COMPONENTS

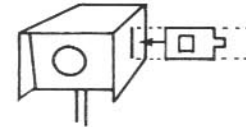
Blower Intake

Intake for the forced air cooling. It is recessed so the operator cannot accidentally cut off the air flow.

Gel/Transparency Holder

Holds standard 3" x 3" gels, 35mm transparencies, and the larger "super slides."

Slip the holder into the Projection Slot as illustrated.



insert from right side

Convenience Handle

Used to position the TRI-LITE and also to carry the unit.

FLASH TUBE MODULE

Plugs into the bottom of the Basic Module and is fastened with four 6x62 flat head screws.

There are two Flash Tube Modules:

Series 450 (TL-B450) — used with all Series 450 power supplies. Contains an FT-120 flash tube. Maximum flash tube rating is 250 watt-seconds.

Series 900 (TL-B900) — used with all Series 900 power supplies. Contains an FQ-10 flash tube. Maximum flash tube rating is 1200 watt-seconds.

WARNING — DO NOT RAPID FLASH! This will cause damage to the flash tube. It could also cause damage to the power supply and to a gel or transparency.

Maximum flash rates:

| w-s | seconds between flashes | w-s | seconds between flashes |
|-----|----------------------------|------|----------------------------|
| 50 | 4 | 400 | 5 |
| 100 | 8 | 800 | 10 |
| 200 | 16 | 1200 | 20 |

This data is based on 32 consecutive flashes

OPTICAL SPOT MODULE

Contains a built-in iris control, 5" flat field projection lens, and a yoke assembly. Plugs into the front of the Basic Module and is fastened with two 6x32 thumb screws.

Iris Control

Adjusts the size of the spot. This is of the same quality as the ones used in fine cameras. To prevent damage, treat it with the same care that you treat your cameras.

Focus Knob

Focuses the spot. Use care when racking the lens all the way out, so that it will not drop.

Save these Instructions

